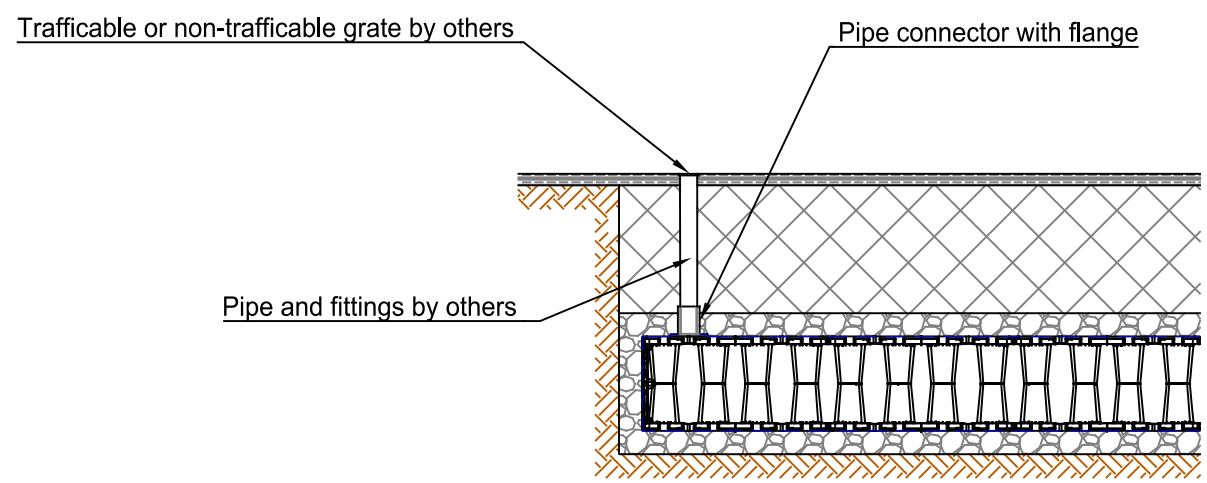
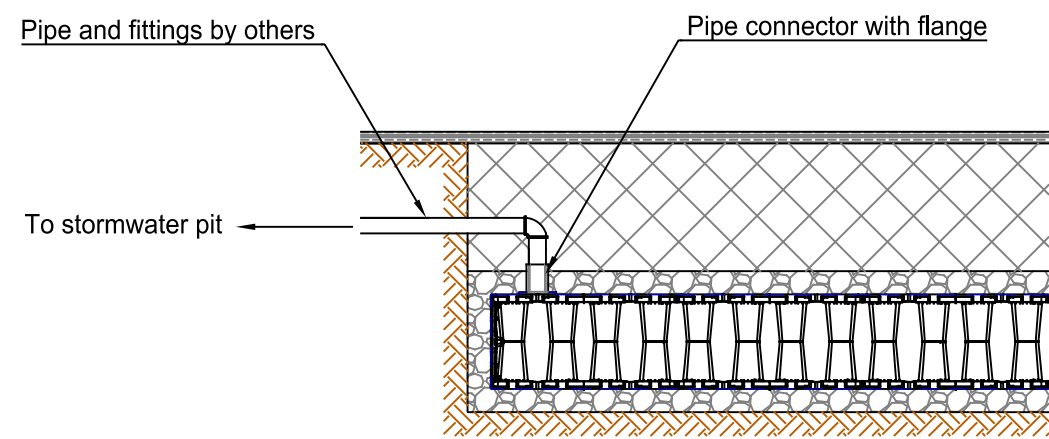


To vent through the solid top access cover, installer to drill twelve (12) 20mm diameter holes. Holes to be located clear of the load/stiffeners bars. This will not affect the structural integrity of the solid top cover.

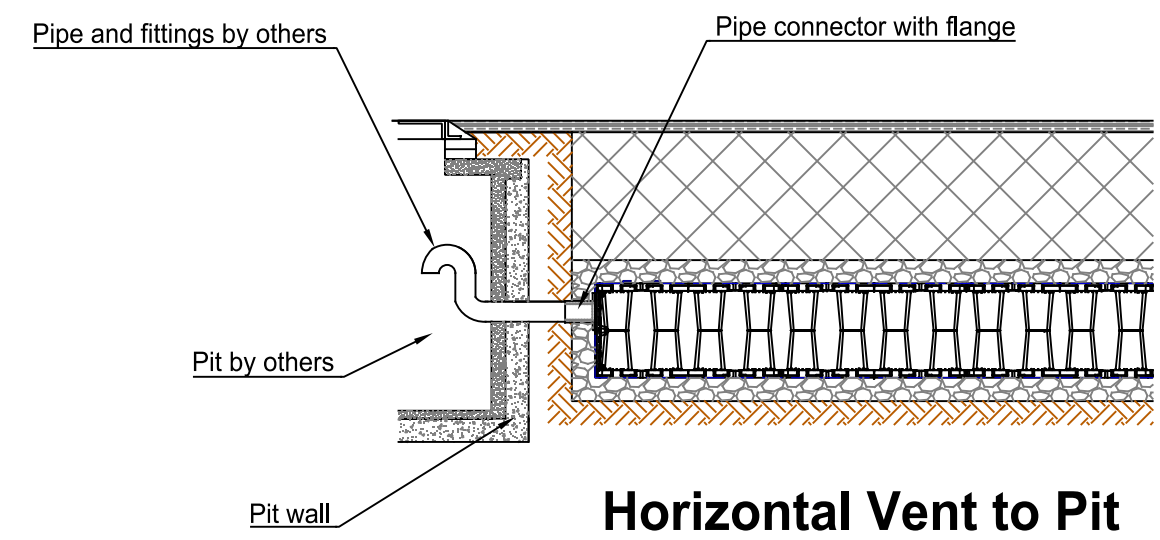
**Vent Through Access Cover**



**Vertical Vent to Surface**




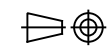
**Vertical Vent to Pit**



**Horizontal Vent to Pit**

Typical cover depths <sup>(1)</sup> over the top of ACO StormBrixx HD	
Location	Typical cover depth (m) <sup>(4)</sup>
Non-Trafficked areas <sup>(2)</sup> i.e landscaping	0.5 <sup>(4)</sup>
Car parks, vehicles up to 2500kg gross mass	0.6 <sup>(4)</sup>
Car parks, occasional vehicles greater than 2500kg <sup>(3)</sup> mass	0.8 <sup>(4)</sup>
Occasional HGV traffic up to 44000kg GVW (HA loading)	Please consult ACO <sup>(4)</sup>

- (1) Assumed 27° load distribution angle through fill material and overlaying surface asphalt or block paving
- (2) Typical cover depth to avoid accidental damage from gardening/landscaping work
- (3) Occasional trafficking by refuse collection or similar vehicles (typically one per week)
- (4) Typical cover depth is a guide, for shallower cover depth, please consult ACO or assess with ACO's online Structural Calculator.

Version	Date	Description	Name
		Drawing Number: STX-HD-VENT	Revision:
		<b>ACO StormBrixx HD Typical Vent Details Installation Detail Drawing</b>	
Created by: K.S	Released by: D.C	Projection: ISO-A 	Units: mm
Created at: Feb 2025	Released at: Feb 2025		Format: A3
Replacement for: -	Replaced by: -	Information contained in this drawing is copyright property of ACO Pty Ltd. Any reproduction in part or whole without written permission of ACO Pty Ltd is prohibited	
			Scale: 1 : 30
			Sheet: 1 of 1